

AJEC.

AL - JAZIRAH ENGINEERS & CONSULTANTS



رؤية
VISION
2030
المملكة العربية السعودية
KINGDOM OF SAUDI ARABIA

Studies • Planning • Design & Engineering
Project Management • Construction Management



AL - JAZIRAH ENGINEERS & CONSULTANTS

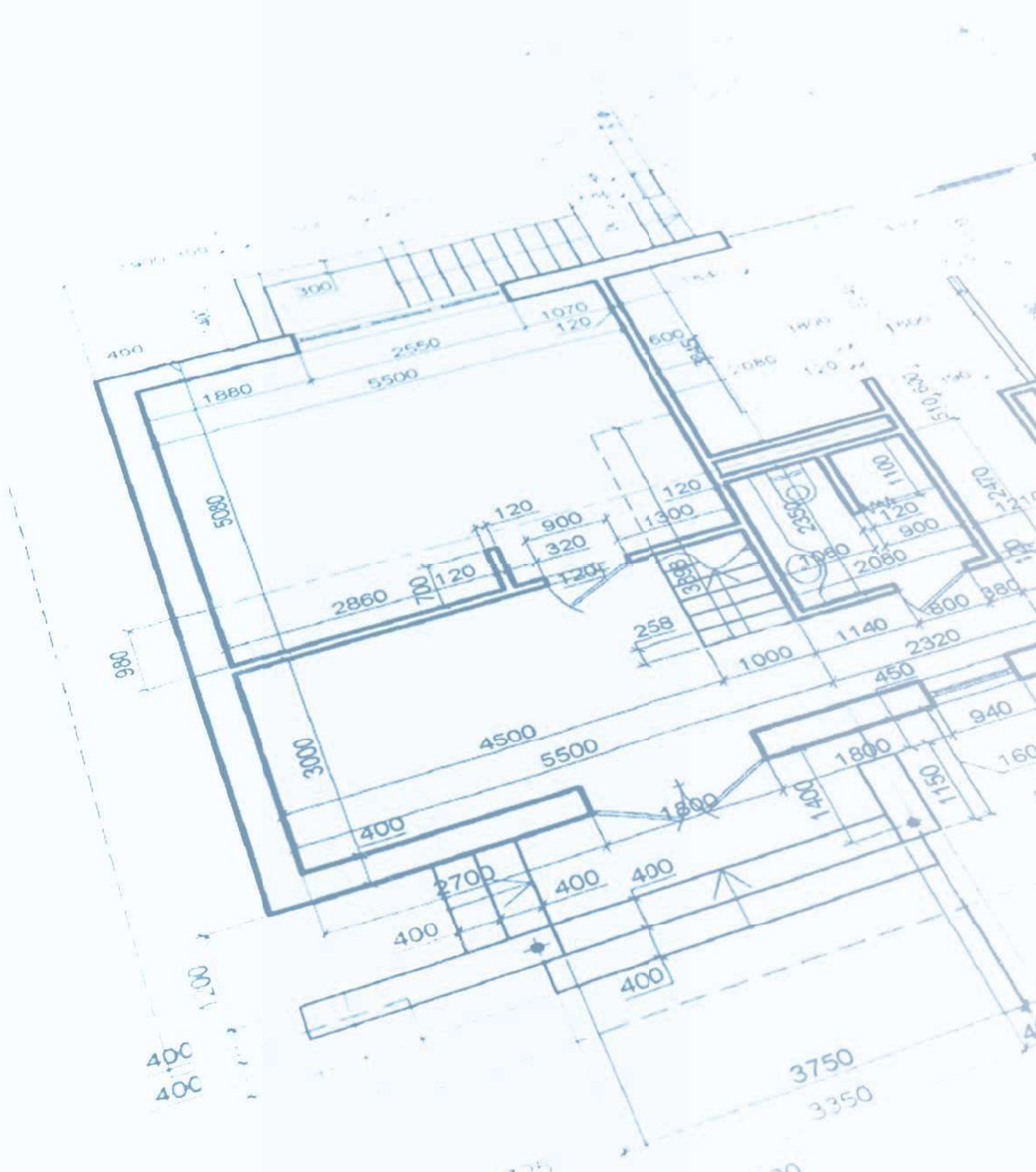


Table of Contents

<i>Message from Director General</i>	01
<i>Who We Are</i>	03
<i>AJEC Offices</i>	04
<i>Quality Management System</i>	05
<i>Our Services</i>	07
<i>Major Strengths & Expertise</i>	08
<i>Infrastructure / Facilities / Communities Development</i>	09
<i>Power & Energy Sector</i>	12
<i>Substations</i>	13
<i>Power Plants</i>	14
<i>Transmission Lines</i>	16
<i>Project Management / Construction Management</i>	17
<i>Association with International Firms</i>	19
<i>Professional Registration and Prequalification</i>	20
<i>Projects Gallery</i>	21
<i>AJEC Major Projects</i>	33
<i>AJEC Employee Resource Group</i>	42

Message from the Director General

We do Engineering Consultancy through state-of-the-art assessment, international standards and in-house engineering resources comprising; Design Engineers, Urban Planners, Project Managers, Project Engineers, Power and Water Specialists, Cost Engineers, Technology Experts and Safety & Security Specialists.

We are regularly escalating our business to greater heights by providing Engineering Services that supersedes our clients' needs. AJEC's Kingdom wide presence composes us as a valuable associate for our clientele. Every Project gets our sincere attention in terms of specialist engineering experience, integrated execution approach, keeping clients' goals and challenges as prime concern.

Every project, no matter it's scale or location, benefits from the same resourcefulness, internationally recognized knowledge and collective approach.

We are determined and energized to provide revolutionary engineering services for ongoing and upcoming challenging projects.





AJEC.

AL - JAZIRAH ENGINEERS & CONSULTANTS



Who We Are

Al-Jazirah Engineers and Consultants (AJEC) is a leading Engineering Consulting Company with headquarters in Riyadh and branch offices across Kingdom of Saudi Arabia (KSA).

Ever since its establishment in 1981, AJEC has been meeting challenges in Projects of Power Sector, Infrastructures, Water, Oil & Gas and Railway Transportation. AJEC has registered a steady growth and success in several other sectors as well and with its expertise and commitment, AJEC has completed over 300 successful projects to date.

With an experience of over 40 years, AJEC today stands in KSA as one of the most honorable name in its field and accredited by all major institutions and organizations, including governmental, semi-governmental and private authorities. AJEC welcomes and resolute on its cooperation with other consultants particularly with international consulting firms, thus contributing to effective technology transfer.

AJEC employs a multi-disciplinary intellectual capital of more than 300 highly trained teams of Electrical Engineers, Mechanical Engineers, Urban Planners, Architects, Civil, Project Planners and Schedulers, Analysts and Surveyors that are ready to assist clients in the investigation, planning, design and implementation of Projects in the field of:

- Studies
- Urban Planning and Urban Designing
- Architectural Engineering Design and Engineering Works
- Electro-Mechanical Design and Engineering
- Structure Design & Engineering
- Civil Utilities Infrastructural Design and Engineering
- Power Generation
- Power Transmission and Distribution
- Project Management and Construction Management



AJEC Offices

Al-Jazirah Engineers and Consultants (AJEC) Headquarters is in Riyadh with major branches in Jeddah, Yanbu and Al Khobar.



Head Office - Riyadh
P.O. Box 17918, Riyadh 11494
Tel. (011) 478 5270, 4790470
Fax. (011) 479 4255
ruh@ajec-consulting.com



Branch Office - Al Khobar
AJEC Tower As Safa Al Khobar
Tel. (013) 858 4415
Fax. (013) 859 3700
alk@ajec-consulting.com



Branch Office - Jeddah
P.O. Box 19702, Jeddah 21445
Tel. (012) 665 5975
Fax. (012) 661 2576
jeddsn@ajec-consulting.com



Branch Office - Yanbu Al Bahr
P.O. Box 30721, Yanbu Al Bahr
Tel. (014) 392 9600
Fax. (014) 3250003
y nb@ajec-consulting.com



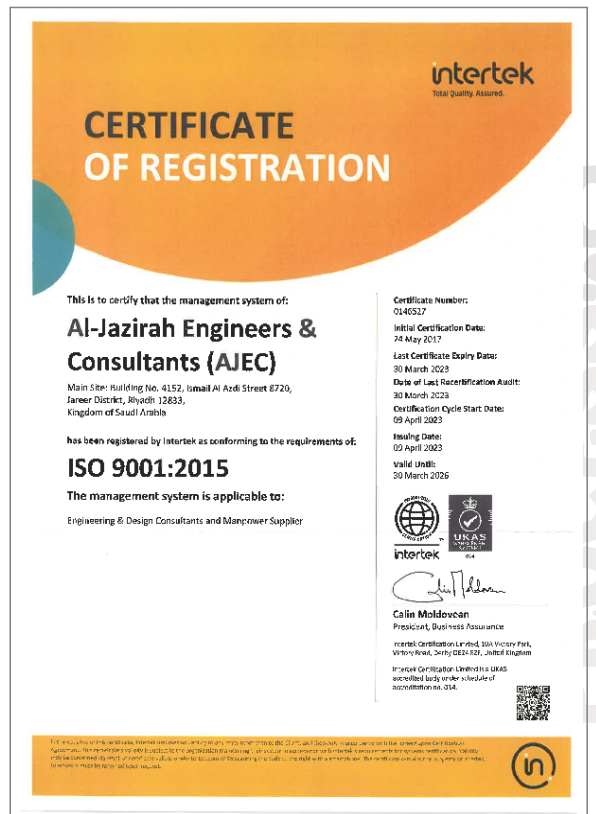
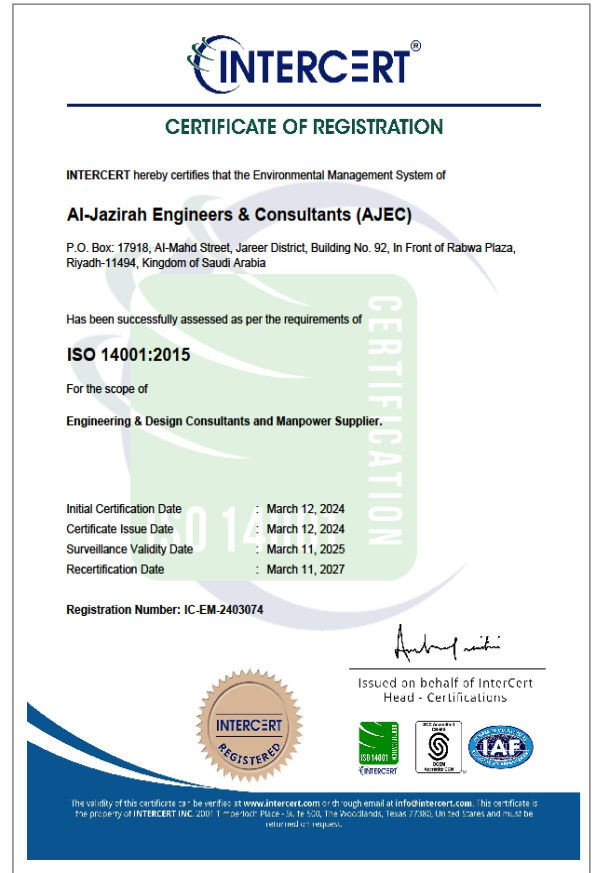
Quality Management System

Quality assurance is the underlying strength of AJEC comprehensive range of services.

AJEC has standardized the QA/QC methodology right from project's basic engineering stage, thru' the project construction and commissioning, right up to the operations stage.

AJEC's management is committed to meet the requirements of customers through implementation of sound Quality Management System. However, the most important and valuable recognition of AJEC abilities comes from its world-class international certification.

AJEC has been awarded the Certificate of Registration of **ISO 9001:2008** by Moody International Certification Ltd.





AJEC has consistently set new standards of excellence by benchmarking its processes, people and service quality in line with the world's best.

Quality Policy

AJEC policy is to meet the customer requirement by means of quality services through a team of dedicated, experienced and motivated engineers. AJEC also ensures a constant endeavor in the efforts for improvement of the Quality System.

Quality Objectives

- ✓ To ensure timely delivery of the services.
- ✓ To develop, implement and improve the quality system as per ISO 9001:2008 effectively.
- ✓ To meet customer requirement and obtain customer satisfaction.
- ✓ To train, involve and motivate employees.
- ✓ To globalize our activities.



Our Services



STUDIES

- Master Plans
- Feasibility Studies
- Cost Estimates
- Topography Surveys
- Environmental Studies



DESIGN ENGINEERING

- Conceptual Designs and Engineering
- Preliminary Designs and Engineering
- Detailed Design and Engineering
- Technical Specification & Bill of Quantities
- Value Engineering



PROJECT EXECUTION

- Project Management
- Construction Supervision
- Design Review and Approvals
- Project Planning and Scheduling
- Testing and Commissioning



ASSISTANCE DURING AWARD OF CONTRACT

- Prequalifications
- Pre bid clarifications
- Tender evaluation
- Assistance in negotiation of contracts

OPERATION AND MAINTENANCE

- Organization and Planning
- Supervision and Procurement of Manpower
- Training personnel
- Operation and Maintenance Manuals



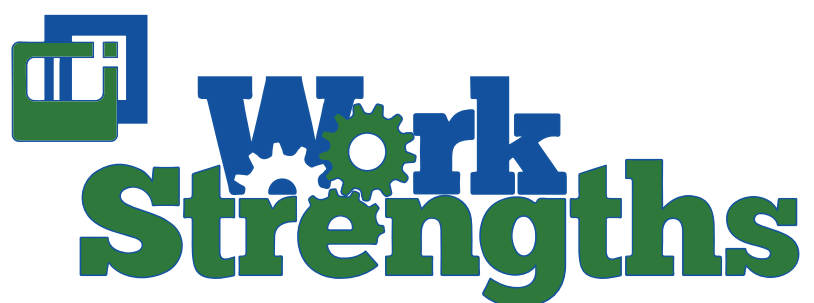
QUALITY ASSURANCE & QUALITY CONTROL

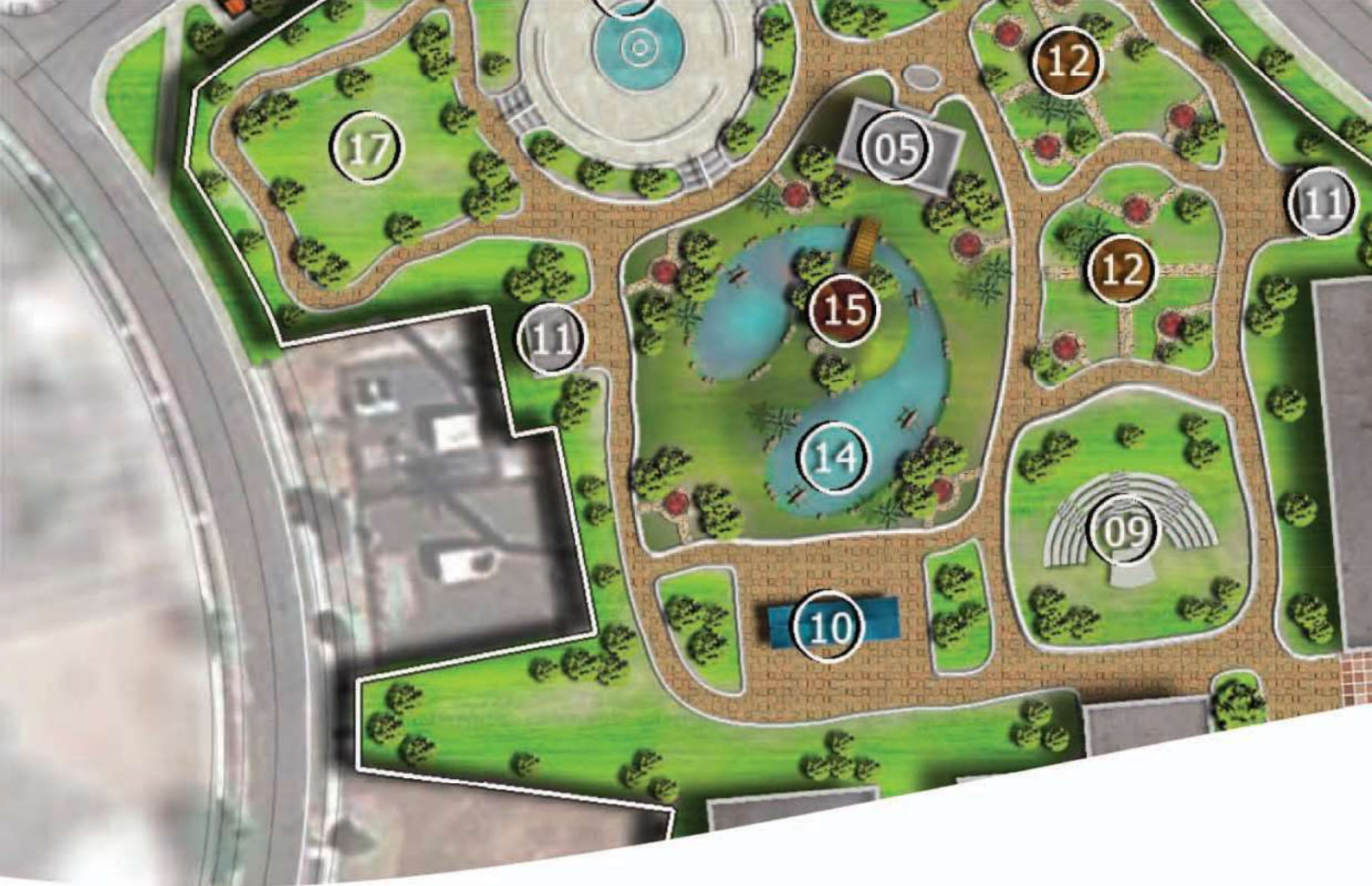
- Development of QA/QC programs
- Develop all necessary Inspection and Testing Plans
- Develop QC procedures
- Develop QA/QC for engineering designs
- Develop QA/QC for procurement
- Develop QA/QC for factory inspection and testing



Major Strengths & Expertise

- Infrastructure / Facilities / Communities Development
- Power & Energy Development Projects
- Project Management / Construction Management
- Association & Joint Ventures





Infrastructure, Facilities & Communities Development

AJEC offers its experience and capabilities in Studies, Planning, Engineering Design, Project Management, Construction Management., Power Development, Urban Development, Industrial and Oil / Gas Development Sectors and Water Development Projects.

Studies

- Master Planning and Water Resources.
- Environmental Impact Assessment.
- Demographic Survey.
- Social and Commercial Survey.

Architectural

- Architectural Conceptual, Detail, Tender & Construction Designs and Engineering for Industrial, Commercial & Residential Facilities.
- Interior / Exterior Design & Engineering.
- Emergency Evacuation Plans & Reports.

Civil Structural

- Structural Design & Engineering for Residential Commercial and Industrial Buildings & Sites.
- Reinforced Concrete Structures for residential and commercial units and Steel Structures for industries and factories etc.



Civil Utilities / Infrastructural

- Design Engineering of Roads / Sanitary, Storm Drainages, Sewage, Water Main and Land Landscape for Residential, commercial and Industrial Sites.

Mechanical

- Mechanical Engineering Designs of Residential, Commercial, Industrial & Utilities Buildings.

Plumbing

- Plumbing Design and Engineering of Residential, Commercial, & Utilities Buildings.

HVAC

- HVAC Design & Engineering of Residents, Commercial, Industrial & Utilities Buildings.

Fire Protection System

- Fire Protection Design and Engineering.
- Fire Life Safety and its potential measures.
- Emergency Evacuation Plans.

Electrical

- Electrical System Design and Engineering for Industrial, Commercial, Residential & Utilities Buildings.
- Telecommunication, Fire Alarm Systems and Building Management Systems.





Power & Energy Sector

AJEC has proved its capabilities in Power Sector as well, by providing economical designs in all engineering disciplines related to energy and power.

System Design & Engineering

- Electrical
Extra High, High, Medium, Low & Extra Low Voltage Electrical System Design & Engineering.
- Telecom & SCADA systems
 - PLC'S (Power Line Carrier Systems).
 - Fiber Optics Communication System.
 - SCADA (supervisory control and data acquisition).
 - PABX's / Digital Exchanges.
- Mechanical
Design & Engineering HVAC / Plumbing / Fire Protection System for Power Plants and Substations Buildings.
- Construction & Project Management
 - Preparation of specifications and Tender Documents.
 - Assistance in contracts awards.
 - Preparation contracts.
 - Project Management & Construction management.

Safety & Security Systems

- Security System Design and Engineering.
- Safety Codes and Standards Compliance, Analysis for certification from HCIS & Civil Defense.

For Electrical and Gas Utilities Projects, AJEC's performance varied from feasibility studies to project management and construction management services. AJEC's in house resources and collaboration with the foreign consultancy firms contributed towards the successful completion of large Power & Gas Pipe Lines projects.

AJEC was involved in the execution of several power plants & gas pipe lines projects within and outside the Kingdom. This includes the Extension in Thermal Power Stations and Construction Supervision of Gas Pipe Lines. AJEC has successfully completed work on number of 380/110/13.8kV and 230/115/69kV substation projects involving in preparation of tender documents, specifications, design review, project management and construction supervision. AJEC undertook detailed design services in electrical, civil and structural disciplines of several 380/230/132/110/34.5/13.8kV substations and power plants. It is AJEC's commitment to continue in providing quality service to its customers, successfully meeting the project requirements and specifications.



Substations

AJEC has rendered Engineering and consultancy services for various substations throughout the kingdom, which includes EHV / HV / MV (380/230/132/110/60/34.5/13.8kV) substations, indoor GIS substations and outdoor switchyards, also enclosed a list of substation projects and the type of services rendered. The various activities & services rendered to clients pertaining to substations are briefly summarized below:

Project Execution

- Project Management.
- Site Supervisory Work for Construction, Erection, Testing & Commissioning Work.
- Project Monitoring & Control.
- Project Planning and Scheduling.

Assistance for Awarding of Contracts

- Basic Design Preparation.
- Preparation of Technical Specifications.
- Preparation of Tender Documents.
- Evaluation of Bids.

Feasibility Studies for Regional Electrification

- Survey of Villages And Hamlets.
- Assessment of Electrical Loads.
- Fixing of Load Centers.
- Estimation of No. of Distribution Transformers and Establishment of Substations.

Detailed Design Engineering Services

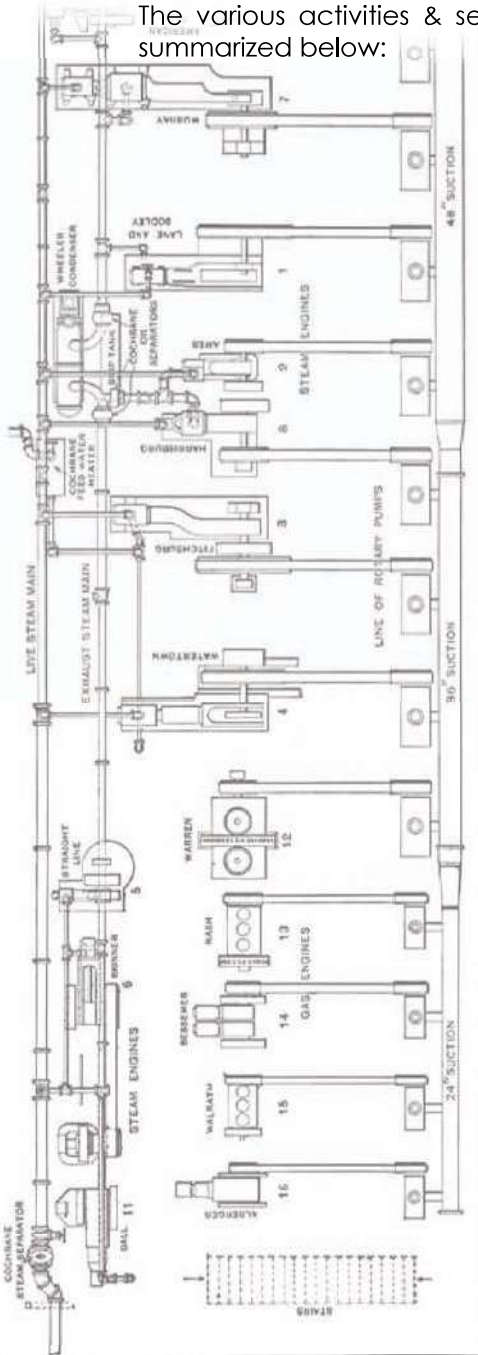
- Electrical
 - Equipment Layouts.
 - Protection & Control System Design.
 - Protection System Interface.
 - Power System Layout and Line Diagram.
 - SCADA and Telecom System Design.
 - Power and Control Cable Sizing and Schedules.
 - Trenches, Ducts, Tunnels, Cable Tray Layouts.
 - Power System Equipment Sizing Calculations.
 - AC DC Distribution for Protection Control and other Utilities.
 - Sizing of CT/VT, Battery Charges, AUX, Transformers, Power Cables.
 - Earthing Grid Design.
 - Lighting Protection System.
 - Internal External Lighting System Design.
 - Fire Alarm and Security Systems Design.
 - Power System Studies includes Short Circuits, Load Flow and Protection Coordination Studies.
- Mechanical
 - HVAC System Design.
 - Pressurized Ventilation System for GIS Halls, Basements, etc.
 - Fire Fighting System Design.
 - Plumbing System Design.
- Civil
 - Architectural and Civil Infrastructure Design.
 - RCC and Steel Structural Design.
 - Roads, Drainage and Sewerage / Civil Infrastructure System Designs



Power Plants

AJEC has rendered Engineering and Consultancy Services for number of power plants throughout the Kingdom and outside the Kingdom, which includes; Thermal, Diesel and Gas Fired Turbine Power Plants.

The various activities & services rendered to clients pertaining to power plants are briefly summarized below:



Feasibility Studies

- Electrical Survey of regions, estimation of loads and fixing of load centers.
- Estimation of capacity to be generated.
- Selection of type of power plants as Diesel, Gas Turbine, Oil-Fired etc.
- Cost and budget analysis.
- Establishment of power plants.

Assistance during Award of Contract

- Front End design preparation.
- Preparation of technical specification.
- Preparation of tender documents.
- Evaluation of Bids.

Project Execution

- Project Planning & scheduling
- Project management
- Design review and approvals
- Site supervisory work for construction, erection,
- Project monitoring & control
- Testing & Commissioning work





Detailed Design Engineering Services

- Electrical
 - Equipment Layouts.
 - Protection & Control System Design.
 - Protection System Interfacing.
 - Power System Layouts And Line Diagram.
 - SCADA and Telecom System Design.
 - Power And Control Cable Sizing And Schedules.
 - Trenches, Ducts, Tunnels, Cable Tray Layouts.
 - Power system equipment sizing calculation.
 - AC & DC distribution for protection control and other utilities.
 - Sizing of CT/VT, battery chargers, Aux. Transformers, power cables.
 - Earthing Grid Design.
 - Lightning Protection System.
 - Internal & external Lighting System Design.
 - Fire Alarm and Security Systems Design.
 - Power system studies include short circuit, load flow & stability.
 - Protection co-ordination study.

- Mechanical
 - HVAC System
 - Ventilation System For Turbine Halls, Tunnels & Trenches.
 - Fuel System Design.
 - Wash Water System.
 - Lubrication System.
 - Radiator Cooling System.
 - Waste Fuel And Incinerator Piping.
 - Water Supply.
 - Water Treatment.
 - Fire Fighting System.

- Civil
 - Structural design.
 - Design of foundation for GT, transformer and other ancillary equipment.
 - Static and dynamic load analysis.
 - Trenches, ducts and tunnels.



Power Transmission and Distribution Lines

AJEC has been continuously associated with the number of 380 kV, 230 kV and 132/110 kV overhead transmission line projects and 33 kV / 13.8 kV distribution lines projects for the following engineering and consultancy services.

Feasibility Studies For Regional Electrification

- Survey of villages and hamlets.
- Assessment of loads.
- Fixing of load centers.
- Estimating of number of substations, power plants and transmission.
- Networks & line lengths.
- Establishment of transmission lines, routes, sizing.
- Establishing the distribution network.

Assistance during Award Of Contract

- Basic design preparation.
- Preparation of technical specifications.
- Preparation of tender documents.
- Evaluation of Bids.

Project Execution

- Project Management.
- Design review and approvals.
- Site supervisory work for Construction, Erection, Testing & Commissioning work.
- Project monitoring & control.
- Project planning and scheduling.

Detailed Design Engineering Services

- Electrical
 - Survey, profiles & plotting.
 - Line design and dimensioning.
 - Tower spotting.
 - Selection of Conductors.
 - Sag charts.
 - Fittings & hardware solution.
 - Insulation co-ordination.
 - SCADA & PLC system.
- Civil
 - Structural designs and analysis.
 - Soil investigations.
 - Tower foundations design.

Project Management & Construction Management

AJEC has demonstrated a track record of successfully delivering projects and its approach is based on implementing best-practiced principles and methods.

AJEC has a separate architectural division with a team of dedicated Architects and associated staff who have successfully completed several prestigious projects in the Kingdom that includes but not limited to Facilities, Communities & Development Projects

Assistance during award of contract

The AJEC project delivery system encompasses bid process, project registration, risk and contracts, project award and client service targets. Knowledge management is maximized through the use of appropriate tools and databases throughout the

- o Front End design preparation.
- o Preparation of technical specification.
- o Preparation of tender documents.
- o Evaluation of Bids.
- o Cost analysis.

Project Execution

AJEC delivers a successful project and maximize the facility investment.

Quality assurance is implemented through well-planned auditing, inspections, tests, reviews and checks, ensuring timely and on-budget project delivery. The significant elements of project execution comprises of:

- o Project planning and scheduling
- o Project scheduling and monitoring
- o Project management
- o Design review and approvals
- o Site supervisory work for construction, erection, testing & commissioning work
- o Project monitoring & control
- o Quality Control and Quality Assurance





Association with International Firms

AJEC has been associated with number of international consulting firms on project to project basis, which has enabled AJEC to deliver specialized engineering services of international quality for number of prestigious projects and these joint ventures have contributed to effective technology transfer. Following are its main associates:



#	Name	Country	Expertise
1	Architecture Eng. Alliance	U.K.	Master Planning & Architectural
2	Les Architects Polak	Belgium	Urban Planning & Landscape Design
3	D + A Consult	Belgium	Infrastr., Landscape, GIS & Digital Mapping
4	Mott MacDonald	U.A.E.	Project Management, Design & Engineering
5	FICHTNER GmbH & Co. KG	Germany	Infrastructure
6	Electricity De France	France	Power Sector
7	ESB International	Ireland	Power Sector
8	Lahmeyer International	Germany	Power Sector
9	Electrowatt Engineering Ltd.	Germany	Power Sector
10	TATA Consulting Engineers	India	Power Sector
11	EPS Ltd.	Egypt	Power Sector
12	PSD Consulting Engineering	South Africa	Power Sector
13	Larsen & Toubro Ltd (L&T)	India	Power Sector, Infrastructure
14	EPESOL	Pakistan	Power Sector
15	Bahrawy Consultancy Group	Egypt	Power Sector
16	Lahmayer Intl. India Pvt. Ltd.	India	Power Sector
17	Electrowatt Engineering Ltd.	U.K.	Power Sector
18	Mirza Associates	Pakistan	Infrastructure, Master Planning, Landscape

Professional Registration and Prequalification

AJEC has been registered and pre-qualified with the following Governmental and Semi-Governmental authorities:

- Saudi Electric Company
- Royal Commission of Jubail and Yanbu
- Saudi Aramco
- Saudi Arabian Railway (SAR)
- Ministry of Health, Riyadh
- Ministry of Electricity and Industry
- Ministry of Agriculture and Water
- Ministry of Defense and Aviation (MODA)
- General Port Authorities, Kingdom of Saudi Arabia
- Directorate of Military works
- National Guard
- Ministry of Information
- Saudi Industrial Development Fund
- Ministry of Communications
- Riyadh Municipality
- SWCC (Saline Water Conversion Corporation)
- Electricity generation authority, Syria
- Ministry of Electricity and water, Bahrain
- Ministry of Electricity and Water , Saudi Arabia
- The Renewable Energy Project Development Office (REPDO)
- Ministry of Housing



Projects Gallery



SWCC - Al Shaqueq Housing



SWCC-Research Building
Institute



SWCC - Al Madina-Jeddah
and Al-Khobar Housing
Compound



AJEC Damman Office



Doghmal Trading Company
Limited - Najaran Tower



Cristal Building



Saudi Environmental Protection Company Factory - SEPCO



Al-Jouf Mall



Kinan Mall



Jazan Health Clinic





Mosque (Yasref Housing)



Haii Al-Nakheel Mosque



Al-Meshaireef 3 Mosque



Haii Al-Bathna Mosque



Al-Oyoun 2 Mosque



Mosque



Mosque
(SAR-Qurayat Light Workshop)



Mess Hall
(SAR-Qurayat Light Workshop)



Recreation Center
(SAR-Qurayat Light Workshop)



Recreation Center
(SAR-Qurayat Light Workshop)



Individualized & Studio Type Rooms
(SAR-Qurayat Light Workshop)



Individualized & Studio Type Rooms
(SAR-Qurayat Light Workshop)





Site Development Plan Birds
Eye View (Waterfront Villas)



Aerial View
(Waterfront Villas)



Site Development Plan
(Waterfront Villas)



Recreation Centre
(Waterfront Villas)



Villa Front View
(Waterfront Villas)



Fitness Room Recreation Centre (Waterfront Villas)



Banquet Hall Recreation Centre (Waterfront Villas)



Bed Room 1 of Villa (Waterfront Villas)



Living Room of Villa (Waterfront Villas)



Dining of Villa (Waterfront Villas)



Mosque (Yasref Housing)



Haii Al-Nakheel Mosque



Al-Meshaireef 3 Mosque



Haii Al-Bathna Mosque



Al-Oyoun 2 Mosque



Mosque



Site Development Plan
(Haii Al-Nawa Camp-3)



Building Type-A Supervisor
Accommodation (Haii
Al-Nawa Camp-3)



Site Development Plan
(Yasref Housing)



Aerial View (Yasref Housing)



Recreation Centre
(Yasref Housing)



Aerial View (Yasref Housing)



Site Development Plan (Al-Bathna)



Site Development Plan
(Labor Camp-C)



Site Development Plan
(Labor Camp-C)



Jeddah LDC Upgrade and
DMS Building



Dental Clinic (Aerial View)



Dining of Villa
(Waterfront Villas)



Scada Control Room
View1 Jeddah LDC Upgrade
and DMS



GCC Electrical Equipment
Testing Lab



GCC Electrical Equipment
Testing Lab



GCC Electrical Equipment
Testing Lab



Site Development Plan (SEC Housing PP12 & PP13)



Family Villa – Executive (SEC Housing PP12 & PP13)



Family Villa – Senior (SEC Housing PP12 & PP13)



Family Villa - Professional (SEC Housing PP12 & PP13)



Family Apartment (SEC Housing PP12 & PP13)



Single Apartment - Junior (SEC Housing PP12 & PP13)



Outdoor Games Courts (SEC Housing PP12 & PP13)



Education Centers School for Boys (SEC Housing PP12 & PP13)

AJEC Major Projects

#	SCOPE	CLIENT	DESIGN TASKS
1	<p>Contracts:</p> <p>PID A-0078 PID A-0070A PID A-0050A</p> <p>Scope:</p> <p>Detailed Architectural and Engineering Designs for the Construction of Facilities, Communities and Infrastructural Development Projects, includes Architectural, Structural, HVAC, Plumbing, Fire Protection, Fire Alarm, Electrical, Telecom, Infrastructural (Civil & Electrical Utilities and Landscape).</p>	<p>Royal Commission for Jubail, Yanbu and Jazan Madinat Yanbu Al-Sinaiyah and Jazan City for Primary and Downstream Industries</p>	<p>Jumma Mosques</p> <ul style="list-style-type: none"> • Haii Ain Al-Nawa 6. • Al-Jabriah 2 • Al-Faisal 2 • Haii Al Sobh 3. • Al Oyoum 3. • Haii Radwa 8. <p>Local Mosques</p> <ul style="list-style-type: none"> • Haii Al-Bathna. • Haii Al-Meshaireef 3. • Haii Al-Nakheel 6. • Al-Oyoum 2. • Jabriah 1. <p>Educational Buildings</p> <ul style="list-style-type: none"> • • • Girls Quran School • Girls Intermediate School • Girls Secondary School • Girls Primary School • Kindergarten Haii Al-Nakheel-4 • Kindergarten Haii Khalid-2 • Kindergarten Haii Radwa-6 • YUC Women's Campus • YUC Men's Campus <p>Office Buildings</p> <ul style="list-style-type: none"> • Interior Design Royal Commission Headquarters. • Yanbu Green Building Project. • Coast Guard Facilities at Haii Al-Bathna. <p>Health Clinics, Medical Center & Dental Clinic</p> <ul style="list-style-type: none"> • Semari 7 • Bathna 2 • Khalid 6 • Haii Al-Meshaireef 1 • Al-Nakheel 3 • Al-Nakheel 2 • Jazan Economic City



#	SCOPE	CLIENT	DESIGN TASKS
2	<p>Contracts: PID A-0078 PID A-0070A PID A-0050A</p> <p>Scope: Detailed Architectural and Engineering Designs for the Construction of Facilities, Communities and Infrastructural Development Projects, includes Architectural, Structural, HVAC, Plumbing, Fire Protection, Fire Alarm, Electrical, Telecom, Infrastructural (Civil & Electrical Utilities and Landscape).</p>	<p>Royal Commission for Jubail, and Yanbu Madinat Yanbu Al-Sinaiyah.</p> <p>Yanbu Aramco Sinopec Refining Company (YASREF) Ltd., Yanbu.</p> <p>Multi Works Co. Ltd.</p>	<p>Community Projects</p> <ul style="list-style-type: none"> • Housing for Teaching Faculty of YIC and YIT (Residential Compound). • Labor Housing in Haii Al-Sawari Hara -1 Phase 2 -Camp C. • Residential Compound Waterfront Phase 3. • Doctors Housing (Apartments) in Haii Al-Nakheel. • Labor Housing Phase 2. • Haii Al-Nawa Hara Al-Ageeg East (Camp 3). • House Ownership Program (HOP), Compound & Site Completion YASREF Housing. <p>Infrastructure Projects (Roads & Civil / Electrical Utilities)</p> <ul style="list-style-type: none"> • Roads and Utilities for the commercial area in Haii Al- Sobh in the Waterfront • Al-Mina Road Infrastructure • Al-Aziziah 1B (EPS Design Project) • Haii Al-Meshaireef - Hara 2 (EPS Design Project) • Sanitary Sewer Line at Flower Festival in MYAS • Proposed Roadway Improvements for Block C1 to C1A • MYAS Gate- Phase 1 • Medium Voltage Power Supply To MMLH Area • Program Development of Al Nawa Buffer Zone • Shareh Masna Alghas (Road project) • Water Tower • Tertiary Roads and Utilities in Haii Al-Mehan, Phase 2 • Power Distribution Network for Land Block C1 to C6 and Street Lighting of By-Pass Highway • Electrical Distribution System for New RCHQ • Upgrade and Lighting For By-Pass Road • MV Distribution Network for Haii Al-Aziziah, 1 B • Study and Design of MV Distribution Network for Haii Al- Fahd. • Electrical Distribution System for New RCHQ Project At MYAS. • Constriction of Infrastructure and Utilities Hall Al Aziziah 1
3	<p>Detailed Architectural and Engineering Review for the Construction of Facilities and Infrastructural Development Projects, includes Architectural, Structural, HVAC, Plumbing, Fire Protection, Fire Alarm, Electrical, Telecom, Infrastructural (Civil & Electrical Utilities and Landscape).</p>	<p>Saudi Arabian Railway (SAR)</p>	<ul style="list-style-type: none"> • Workshops Enhancement Project Supervision Consultancy (WEPS) • Blanket Purchase Agreement for Survey Services for all SAR location • Engineering and Contractual Service on nonconformity Material • Examination of Structures & Earthworks Services • Al Mashaer Mugaddassah metro design and consultant Services for the engineering and consultancy services • Hydrological Survey for Qurrayat. • Design Verification Consultant for Various 'Civil and Trackwork' and Building' Packages (PSMW, RPSAB, NWS, TSMG CTW 110 & CTW 400). • Design Consultant Services -to Formulate Unified Corporate Specification for Current & Future SAR Projects.

#	SCOPE	CLIENT	DESIGN TASKS
4	Detailed Architectural and Engineering Designs for the Construction of Facilities, Communities and Infrastructural Development Projects, includes Architectural, Structural, HVAC, Plumbing, Fire Protection, Fire Alarm, Electrical, Telecom, Infrastructural (Civil & Electrical Utilities and Landscape).	Saudi Electricity Company (SEC)	<ul style="list-style-type: none"> • Construction of Access Road from Durma Highway to Riyadh PP 12 & PP13 at Central Sector. • Construction of SEC Housing Compound of PP12 & PP13 in Central Sector.
5	Firefighting and Emergency Evacuation Analysis and Report	Adeem Al Wataniah for Construction and Development	<ul style="list-style-type: none"> • Headquarters Business Park at Jeddah Corniche, KSA.
6		FICHTNER Ministry of Water and Electricity (MOWE) Riyadh–Saudi Arabia	<ul style="list-style-type: none"> • Master Plan for Improvement of Water Transmission Lines and Supply Systems in Asir, Jazan, Makkah and Al- Baha Regions
7	Detailed Architectural and Engineering Designs for the Construction of Facilities and Infrastructural Development Projects, includes Architectural, Structural, HVAC, Plumbing, Fire Protection, Fire Alarm, Electrical, Telecom, Infrastructural (Civil & Electrical Utilities)	Agility, A New Logistics Leader, Kuwait	<ul style="list-style-type: none"> • Warehouse in Dammam, KSA • Warehouse in King Abdul Aziz Port, Dammam, KSA



#	SCOPE	CLIENT	DESIGN TASKS
8	<p>Contracts: RFx- SEC-COA RFx- SEC-WOA RFx- SEC-SOA Scope: Complete Engineering Design & Packages for Base Design Stage Detail Design Stage Issue for Construction (IFC) stages & As-built Stage performed for all Disciplines (Electrical Primary, Electrical Secondary, Site Development, Structural, Architectural, and Mechanical, Communication and Transmission Line / Underground Cable Design with complete Interfacing & Protection System etc.</p>	<p>Client: Saudi Electricity Company</p> <p>Contractor: Saudi Services for Electro Mechanic Works Co. (SSEM)</p> <p>Larson and Turbo-K.S.A. (LTSA)</p> <p>National Contracting Company (NCC)</p> <p>Al-Toukhi Company (TIT)</p>	<p>380/132/13.8kV Substations</p> <ul style="list-style-type: none"> • 380/132/13.8KV BSP # 9026 in Riyadh • 380KV Switching Substation # 9041, Riyadh • Airport North Station 380/132/13.8kV BSP # 9089, Riyadh • Airport Housing 380/132/13.8kV BSP # 9050, Riyadh • AR RAED 380/132/13.8 kV BSP # 9042 for Integration of PP-14 in 380/132 kV S/S # 9023 • New Aziziyah 380/132/13.8kV BSP # 9044 • New Riyadh Metro 380/132/33/13.8KV BSP # 9053 • New Riyadh Metro 380/33KV BSP # 9054 • AL-JILLAH 380/132/33KV BSP # 9063 • New Al-Kharj 380/132/33/13.8KV BSP # 9067. • New As Safa 380/132/13.8kV BSP # 9014 in Riyadh • New Sulttanah 380/132/13.8KV BSP # 9026 in Riyadh • New 380/132/13.8kV Ad-Dawadmi (#9037) BSP • New 380/132kV Qassim-4 (#9032)BSP • New Al-Waha 380/110/13.8kV BSP • Duba Green 380/132kV BSP, Duba • New Al-Adel380/110/13.8kV BSP in Jeddah. • New Bisha 380/132kV BSP, in Bisha, • New 380/110/13.8kV SISED TAIF-2 BSP.
9	<p>Contracts: RFx- NGSA-COA RFx NGSA -WOA RFx- NGSA -SOA RFx- NGSA -EOA Scope: Complete Engineering Design & Packages for Base Design Stage Detail Design Stage Issue for Construction (IFC) Stages & As-built Stage performed for all Disciplines Electrical Primary, Electrical Secondary, Site Development, Structural, Architectural, and Mechanical, Communication and Transmission Line / Underground Cable Design with complete Interfacing & Protection System etc.</p>	<p>Client Saudi Electricity Company</p> <p>Contractor: GE COGELEX-Riyadh</p> <p>SSEM-Dammam LTSA, Khobar NCC Dammam Al-Toukhi Co. Riyadh Al-Osais, Dammam Al-Ojaimi Co. Dammam Al Mashariq Co. Dammam Al-Gihaz Co. Riyadh</p>	<p>132/13.8kV Substations</p> <ul style="list-style-type: none"> • 2 Nos. Substation (JEC RC S/S and JEC Phase – 1 S/S) • 5 Nos Substation (Abha North S/S, Al Alayah S/S, Najran Central S/S, Jizan City-2 S/S & Heredah S/S) • Al-Diriyah 132/13.8 kV S/S • East Qurayyat 132/13.8 kV S/S • Al-Aflaj # 8766 S/S • Al-Jouf Reinforcement SS at Al-Jouf Power Plant • Rafha-2 132/13.8kV Substation in Rafha Area. • New132/13.8kv Substation # 8860 in Qassim • The New 132kV Switchyard & 13.8kV OHTL at Midyan Gas. • New 132/13.8kV S/S # 8096 at Hail University, Hail City. • Reinforcement of 132/33/13.8kV S/S Nos. 8902 and 8903 in Hail Area. • New Al-Dhabbat 132/13.8kV Substation # 8177, in Center Of Riyadh • New Muzahmiah 132/13.8 kV S/S # 8522. • New 132kV U/G Circuit between College Complex S/S # 8522 & Existing OH T/L of S/S # 8070-8077/8076 In Al- Muzahmiah Area. • Arar University 132/13.8 kV S/S. • 132/13.8kV Substation, New 110/13.8kV Yanbu City Substation

#	SCOPE	CLIENT	DESIGN TASKS
10	<p>Contracts: RFx NGSА -EOA RFx-NGSA-WOA</p> <p>Scope: Complete Engineering Design & Packages for Base Design Stage Detail Design Stage Issue for Construction (IFC) stages & As-built Stage performed for all Disciplines (Electrical Primary, Electrical Secondary, Site Development, Structural, Architectural, and Mechanical, Communication and Transmission Line / Underground Cable Design with complete Interfacing & Protection System etc.</p>	<p>Client Saudi Electricity Company</p> <p>Contractor: Saudi Services for Electro Mechanic Works Co. (SSEM) Larson and Turbo-K.S.A. (LTSA, National Contracting Company, Al-Toukhi Co. Riyadh Al-Osais, Dammam Al-Ojaimi Co. Dammam Al Mashariq Co., Dammam GE COGELEX, Riyadh ISOLUX, Riyadh SSEM, Dammam ETA, JEDDAH ABB Contracting, Jeddah</p>	<p>115/13.8kV /110/13.8kV /TL & UG Substations</p> <ul style="list-style-type: none"> • Maritime Yard Project 115/13.8kV Substation • 115 kV U/G Cables for South Dammam, 115/13.8 kV S/S, Meena 115/13.8 kV S/S, Saihat 115/13.8 kV S/S & West Khobar 115/13.8 kV S/S • 115 kV Underground Cables for the Integration of South East Dammam 115/13.8 kV S/S • 06 Nos. 115kV UG Projects in Dammam • New Jubail-7, 115/13.8 Substation, Jubail • 115/13.8kV SS DIE-2 Substation • New115/13.8kv Al-Uqaiar-A & B Substations in Al- Hassah Area. • Extension of Existing KFIP 115/34.5kV Substation # 15BC in Jubail. • the New 115/13.8kV Markaz Al-Khobar Substation • 115/13.8kV Substation and 115kV Underground cable Portion for the 115kV Power Supply to MARAFIQ's SWRO IN SADARA COMPLEX IN JUBAIL-2. • 115kV Underground cable circuit between Al-Khaldiyah 115/13.8kV Substation & New KAAP 115/13.8kV • 110/13.8kV Al Qaim substation at Taif • New Khandaq 110/13.8kV SS , Madinah • 110/13.8kV ET-2 Substation, in Jeddah • 110/13.8kV New Library Substation in Makkah • 110/13.8kV New Service Building Substation in Makkah • 110/13.8kV New Security Building Substation in Makkah • New 110/13.8kV TPS-2 Substation at Taif, New 110/13.8kV Slama-2 Substation at Jeddah • New 110/13.8kV Khurma Substation" and Extension of IP3-3 at Jeddah
11	Engineering consulting and site supervisory services	Saudi Electricity Company Western Region	Power Plant Rabigh Steam Power Plant Extension Stage-III 2x260MW Thermal Units.
12	Project Management & Design Review and Approval and Site Supervisory Services	Saudi Electricity Company Western Region Jeddah	Power Plant Duba, Tabouk & Al-Wadji P/P Extn. & Relocation of One GTG Unit to Al-Wadji P/P
13	Provision of field Engineers for supervision services	POYRY (SEC-WOA)	Power Plant Shoaibah II Combined Cycle Power Plant • 380kV Substation • 380kV Transmission Line
14	Project Management & Design Review and Approval and Site Supervisory Services	Saudi Electricity Company Southern Region	Power Plant Jazan (250 MW), Tihama (60 - 80 MW) and Sharourah (42 - 57 MW) Power Stations Extension by Gas Turbines
15	Site Supervisory Services	Mott MacDonald Limited (MML), UK	Power Plant 1805 MW combined cycle Riyadh PP-11 Project
16	Construction Supervision Services	Saudi Electricity Company Central Operating Area	Power Plant • Generation Projects, SEC-COA office in Riyadh City. • Project Sites located at power generating plants located within the authority of Central Operating Area.
17	Consultancy Services	FICHTNER (SEC- WOA)	Power Plant Construction of Conventional Steam Power Plant at Jeddah South Thermal Power Plant - Stage-I (4x723 MW) & 380kV Substation & 380kV Cables
18	Consultancy and Engineering Services Supervising Execution	FICHTNER/SWCC	Power Plant SWCC – Yanbu Desalination & Power Plant Projects Phase-3



#	SCOPE	CLIENT	DESIGN TASKS
19	Providing of Engineers	Saudi Electricity Company, Southern Operating Area	Power Plant Operation of Power Plants of SEC-SOA
20	Consultancy and Analysis Studies	Saudi Electricity Company Southern Region	Power Plant Operation and Maintenance Problem of Jazan Power Plant
21	Supervision and consulting services	Electricity Corporation, Riyadh	Power Plant Construction of diesel generator power house and LV networks.
22	Design review & approvals, Project Management and Site Supervisory services for installation, testing and commissioning.	Saudi Electricity Company Western Region	Substation & Transmission Line 380/110/13.8kV GIS Medina South Substation and 380kV Rabigh-Medina Transmission Line <ul style="list-style-type: none"> • New 380/110/13.8kV Medina South GIS substation • About 325 km of 380kV double circuit OHL line between Rabigh and Medina South.
23	Site supervision.	Saudi Electricity Company Western Region	Transmission Line <ul style="list-style-type: none"> • Rehabilitation of 380kV Rabigh-Yanbu Transmission Line • Rehabilitation work of concrete foundation of 380kV Rabigh-Yanbu overhead line.
24	Design review and approvals, project management and site supervisory services	Saudi Electricity Company Western Region	Substation Extension of Medina South 380kV GIS Substation in Medina <ul style="list-style-type: none"> • 3rd 500MVA 380/110kV transformer, associated 380kV and 110kV switchgear and 110kV bus section breaker.
25	Project Management, Design Review & Approval and Site Supervisory services	Saudi Electricity Company, Central Region/ Electricity Corporation, Riyadh	Substation 380/110/13.8kV Al-Jamia GIS S/S & Associated S/S Ext. in Jeddah 380/110/13.8kV GIS New Al-Jamia Substation and associated extensions at two 110kV GIS substations, 380kV, 2500mm ² XLPE cables of 11Km route (33Km of cable) and 110kV 630mm ² XLPE cables of 66Km route length (168Km of cables) pilot and fiber optic cables and load dispatch system extension. (Design Review and Approval services by TCE – India)
26	Project Management, Design Review & Approval and Site Supervisory services	Saudi Electricity Company Western Region, Jeddah	Substation & Transmission Line New 380/110/13.8kV Wadi Fara Substation, new 110/13.8kV Yanbu North & Khayber Substations along with associated extensions of 4 nos. 380/110kV and 110kV substations in Yanbu and Medina, 110kV Double Circuit Overhead Transmission Lines of 50KM between Yanbu North & SWCC Extension and 138KM between Madinah & Khyber and 10KM of 110kV Power & Pilot Cable.
27	Project Management, Design Review & Approvals and site supervisory services	Saudi Electricity Company Western Region, Jeddah	Substation New 380/110kV GIS substation for PP3 extension, shifting of Existing Four GT units and existing 110kV cables to new 110kV substation, Reinforcement of existing 110kV IP3 S/S and associated SCADA, Tele-protection and communication system and 380kV & 110kV Power, Pilot and fiber optic cables.

#	SCOPE	CLIENT	DESIGN TASKS
27	Project Management, Design Review & Approvals and site supervisory services	Saudi Electricity Company Western Region, Jeddah	Substation New 380/110kV GIS substation for PP3 extension, shifting of Existing Four GT units and existing 110kV cables to new 110kV substation, Reinforcement of existing 110kV IP3 S/S and associated SCADA, Tele-protection and communication system and 380kV & 110kV Power, Pilot and fiber optic cables.
28	Project Management and Site Supervisory Services	Saudi Electricity Company Western Region - Jeddah	Substation <ul style="list-style-type: none"> • 380/110kV S/S Extensions at KMT and Jamia Substations including Associated SCADA, LDC and telecommunications • 380kV Power, Pilot and Fiber Optic Cables
29	Site Supervision Services	Saudi Electricity Company Southern Operating Area	Transmission Line 380kV and 132kV Transmission Projects in SOA
30	Construction Management Services	Saudi Electricity Company Central Operating Area	Substation & Transmission Line 380kV Substation and Overhead Transmission Lines works Associated with the Integration of Power Plant 10
31	Design review, approvals, project management and site supervisory services	Saudi Electricity Company Western Region	Substation 110kV Network Extensions and Extn of 380kV GIS S/S in Jeddah <ul style="list-style-type: none"> • Three (3) new 110/13.8kV GIS substations at Air Defense, Thager • Al-Falak and extension of 380kV GIS Outer Makkah substation • Seven (7) 110/13.8kV GIS substations • Associated 110kV XLPE/ oil filled power and pilot cables and LDC works in Jeddah.
32	Consultancy Services - Project Management, Design Review, and Site Supervision Services	ILF (SWCC)	Substation & Transmission Line Ras Al Khair – Riyadh Water Transmission System <ul style="list-style-type: none"> • 380/13.8kV Substation • 380kV Double circuit Transmission Lines
33	Construction Supervision Services	ILF / SWCC	Substation & Transmission Line Yanbu-Madina Water Transmission System (Third Phase) <ul style="list-style-type: none"> • 380/13.8kV and 132/13.8kV Substation, • 380kV and 132kV Transmission Lines
34	Consulting services in association with TCE Consulting Engineers, India. Scope of services covers assistance in Tender Evaluation, Design Review and Approvals, Inspection at manufacturers Works and Site Supervisory Services.	Ministry of Electricity Public Establishment of Electricity for Generation & Transmission (PEEGT)	Substation 230/66/20kV GIS substations and 230kV XLPE cables.



#	SCOPE	CLIENT	DESIGN TASKS
35	Basic design and preparation of tender documents	Electricity Corporation, Riyadh	Substation & Transmission Line South Taif Electrification Project Phase-I in Taif Three (3) (132)110/33 kV substations and associated (132)110kV transmission line: <ul style="list-style-type: none"> • (132)110kV transmission lines – new 110kV double circuit lines to three (3) new substations and additional circuit on one existing OHL/cable circuit. • (132)110/33kV three (3) new substations at Ushayrah, Gaya and Thagif and extension of three (3) existing substations of Sayl Al-Kabir, Shuhada and Wadi Liya. • LDC system for extension of existing substation. • 33kV distribution networks for districts of Ushayrah, Gaya, Al-Sour and Al-Sahan.
36	Basic design, preparation of specifications & tender documents and evaluation of bids	Saudi Electricity Company Western Region	Substation New (132)110/13.8kV Al-Nasr & Al-Aous Substations in Medina <ul style="list-style-type: none"> • Extension of existing networks in Medina. • New (132)110/13.8kV GIS substations at Al-Nasr and Al-Aous in Medina
37	Site supervisory services	Electricity Corporation, Riyadh	Substation New 132kV Substation & Extension of 110kV Substation in Taif New 132kV substation of Gaya and Taif and extension at 110kV Wadiliya and Shuhada substations.
38	Project Management, Design Review & Approval and Site Supervisory services	Saudi Electricity Company Western Region	Substation & Transmission Line <ul style="list-style-type: none"> • 132/33/13.8kV new Taima, Al-Wadjh & Al-Ula Substations and extension of Tabuk Substation • 132kV Double Circuit Overhead Transmission Lines of 179KM between Al-Wadjh & Al-Ula and 252KM between Taima & Tabuk Substation Extension
39	Site Supervision Services	Saudi Electricity Company, Southern Operating Area	Transmission Line Transmission Projects of 132/13.8kV Substation and Transmission Lines for the year 2003 in Southern Operating Area
40	Consultancy Services Management, Design Review, and Site Supervision Services for 132/33/13.8kV Substations and 132/33kV Overhead Lines.	ILF (SWCC)	Substation & Transmission Line Power Supply to Shuqaiq Phase-2 WTS Project <ul style="list-style-type: none"> • 132/33/13.8kV Substations. • 132/33kV Overhead Lines.
41	Design review & approvals, project management and site supervisory services for erection, testing & commissioning and energization of substations, associated transmission lines, cable networks and load despatch systems.	Saudi Electricity Company Western Region	Substation 110kV Network Extensions in Jeddah, Makkah & Medina <ul style="list-style-type: none"> • JEDDAH: New 110/13.8kV GIS substation of Health Science Center and East Express Highway and extension of seven (7) existing substations in Jeddah associated 110kV XLPE cables. • MAKKAH: New 110/11(13.8) kV GIS Gishla substation and extension of South Aziziah substations, associated transmission lines, 110kV XLPE cable works and LDC system. • MEDINA: New 110 / 13.8kV Bab Al-Awali and Haram-I GIS substations and extensions of four (4) substations, associated 110kV XLPE cable works and LDC system.
42	Design review and approval.	Saudi Electricity Company Western Region	Substation Extension of 110kV Hara Gharbia Substation in Medina <ul style="list-style-type: none"> • Extension of 110kV switchgear for addition of 110kV reactor at Hara Gharbia GIS substation in Medina.

#	SCOPE	CLIENT	DESIGN TASKS
43	Design review & approvals, project management and site supervisory services for installation, testing and commissioning.	Saudi Electricity Company Western Region	Substation Extension of 110kV Bir Ali Substation in Medina <ul style="list-style-type: none"> • 110kV switchgear for extension, new substation building • 110/12(15)kV transformers • 13.8kV switchgear, 13.8kV shunt reactors • Associated 110kV XLPE cables • LDC works for extension of 110/13.8kV GIS Bir Ali substation
44	Design Review & Approvals, Project Management and Site supervisory services.	Saudi Electricity Company Western Region	Substation & Transmission Line New 110/13.8 kV Yanbu East Substation in Yanbu <ul style="list-style-type: none"> • Installation, testing and commissioning of new 110/13.8kV GIS substation, 110kV overhead line and associated LDC works.
45	Design review and approval services.	Saudi Bin Ladin Bemco, Jeddah	Substation 110/13.8kV Haram-II Substation in Medina
46	Basic engineering, preparation of tender specification and documents, tender evaluation, design review and approvals, project management and site supervisory services	Saudi Electricity Company Western Region	Substation New 110/13.8kV Ajyad & Al-Maabda Substation and Network Extensions in Makkah The new 110/11(13.8)kV GIS substation, associated 110kV XLPE power and pilot cables and LDC works at Ajyad and Gazzah substation in Makkah <ul style="list-style-type: none"> • Ajyadh substation • Gazzah substation • Haram and Misfalah extension
47	Design review and approvals, project management and site supervisory services.	Saudi Electricity Company Western Region	Substation Extension of 110/13.8kV Airport Road GIS Substation in Medina <ul style="list-style-type: none"> • 110kV switchgear extension, new substation building • 110/15kV transformers • 13.8kV shunt reactors, 13.8kV switchgear and auxiliary services • Associated 110kV XLPE power cables and LDC works. New 110/13.8kV GIS Shubaikah Substation in Makkah <ul style="list-style-type: none"> • 110/13.8kV Shubaikah GIS substation, associated 110kV XLPE power and pilot cables and LDC works.
48	Basic design and preparation of specification and tender documents	Saline Water Conversion Corporation, Riyadh.	Substation & Transmission Line <ul style="list-style-type: none"> • 110kV OHTL & 110/33/11 kV Substation in Yanbu and Al- Musajjeed • 110kV OHTL from Yanbu - Al-Musajjeed and 110/33/11kV GIS substation at sending and receiving end.
49	Site supervisory services	Electricity Corporation, Riyadh	Substation <ul style="list-style-type: none"> • Haram-2 A/C 110/13.8kV GIS Substation in Makkah • Haram-2 Air Conditioning substation, Makkah.
50	Project management, design review & approvals and site supervisory services	Saudi Electricity Company, Central Region/Electricity Corporation, Riyadh	Substation 110kV Jeddah Network Extensions covering New Quwaizah 110/13.8kV GIS substation, extension of eight (8) existing 110kV GIS substations and associated 110kV, 630mm ² XLPE of 6 Km route length power, pilot and fiber cables.
51	Project Management, Design Review & Approval and Site Supervisory services	Saudi Electricity Company Western Region	Substation 110/13.8kV GIS S/S & Associated S/S Ext. in Jeddah, Makkah & Medina Four (4) New 110/13.8kV GIS Substations in Jeddah, Makkah and Medina along with associated extensions of 5 Nos. 110kV GIS substations, associated 110kV, 630mm ² XLPE cables of total 37 Km route (111Km of cables), pilot and fiber optic cables and LDC works.
52	Project Management and Site Supervisory Services	Saudi Electricity Company Western Region, Jeddah	Substation 110/11(13.8) kV S/S Zahra and 110/11(13.8) kV S/S Haram III and associated extension of existing substation, LDC & SCADA System, 110kV power, pilot cable and fiber optic cables.



#	SCOPE	CLIENT	DESIGN TASKS
53	Site Supervisory Services	Saudi Electricity Company Western Region Jeddah	Substation <ul style="list-style-type: none"> • 110/13.8kV New Substations at Rabwa, Naeem, KM-8 • Associated 110kV Extensions of Faisaleyyah and Jamia Substations including LDC & SCADA System Extension • 110kV power and fiber optic cables.
54	Project Management and Site Supervisory Services	Saudi Electricity Company Western Region Jeddah	Substation <ul style="list-style-type: none"> • New 110/13.8kV Substations at Saudia City, East Express Highway (2), Bani Malik and Wazeeriah a • Associated 110kV Extensions at Jamia and Falak Substation, including LDC & SCADA System Extension • 110kV power, pilot & Fiber optic cables.
55	Project Management and Site Supervisory Services	Saudi Electricity Company North-West Region Jeddah	Substation & Transmission Line Medina & North West Area <ul style="list-style-type: none"> • New 110kV Substations/Extensions • 110kV Transmission Lines • 110kV Underground Cables
56	Construction Management Services	Saudi Electricity Company Eastern Operating Area	Substation <ul style="list-style-type: none"> • Power Supply Project to 115/13.8kV Saudi Aramco New Corporate Data Center and North Park Office Complex • Power Supply To Manifa Oil Field Development Projects And Other 380kV Substations Projects
57	Design review and approvals and site supervision services	Saudi Electricity Company, Southern Operating Area	Power Plant Gas Turbine Extension Projects at Jizan, Asir and Bisha
58	Site Supervision Services	Saudi Electricity Company, Southern Operating Area	Substation & Transmission Line DTA Projects for 2008at southern Operating Area <ul style="list-style-type: none"> • 380/132/110/33/13.8kV Substations/Extensions • 380/132/110/33/13.8kV Transmission Line
59	Engineering Support Services (ESS)	Saudi Electricity Company Eastern Operating Area	Transmission Line 380/115kV Transmission Projects
60	Design Review & Approvals, Project Management and Site Supervision Services for Installation, Testing and Commissioning.	Saudi Electricity Company Western Region	Transmission Line 167 km of 380kV double circuit Rabigh-Makkah transmission line and extension of 380kV HVM-Makkah substation.
61	Site Supervision Services	Electricity Corporation, Riyadh	Transmission Line 110kV & 132 kV OHTL in Taif <ul style="list-style-type: none"> • Transmission lines 110kV Shuhada to Wadiliya. • 132kV Wadiliya to Gaya and Thagif. 33kV Distribution Network in Taif • 33kV distribution network in Missan, Moraifik and Bani Malik area. Step down transmission station at Taif power plant. • 132kV Transmission Line to Ushayrah in Taif • Ushayrah electrification by double circuit 132kV transmission line.
62	Project Management, Design Review & Approval and Site Supervisory services	Saudi Electricity Co - Western Region	Substation & Transmission Line 110/13.8kV King Khalid National Guard Hospital GIS S/S, Jeddah <ul style="list-style-type: none"> • 110/13.8kV King Khalid National Guard Hospital GIS substation, Jeddah along with 4.5 Km of 110kV double circuit overhead transmission line and LDC works.
63	Consultancy Services	Saudi Electricity Company, Southern Operating Area	Providing Engineers & Generator Specialist for different Generation Departments and Divisions.

#	SCOPE	CLIENT	DESIGN TASKS
64	Consultancy Services	Saudi Electricity Company, Southern Operating Area	Providing Engineers for Asir CPS, Jazan CPS, Najran CPS, Tihama (Al-Quonfada) CPS, Bisha CPS, Al Baha CPS, Sharoura power station, Satma and Baish power stations in addition to any new extension.
65	Consultancy Services Site Supervision Services	ILF (SWCC)	Ras Al-Khair – Hafr Al-Baten Water Transmission System
66	Consultancy and Engineering Services	FICHTNER GmbH & Company, KG, Germany	SWCC - Natural Gas Transmission System to Al-Khobar Desalination Plants
67	Providing Engineers Services	Saudi Electricity Company, Southern Operating Area	Jazan and Baha Electric Distribution Projects
68	Consulting services as Associates of Rust Kennedy & Donkin (now PB Power) for supervision of erection and commissioning.	Ministry of Electricity Public Establishment of Electricity for Generation & Transmission (PEEGT)	Power Plant 5x200MW units at Aleppo Thermal Power Station, Syria.
69	Consulting services as Associates to ESBI - Ireland for supervision of erection and commissioning.	Ministry of Electricity & Water, Bahrain	Power Plant Phase-II of Hidd 630MW combined cycle power plant in Bahrain.
70	Consulting services for design review and site supervision.	Qatar Electricity and Water Corporation (KAHRAMAA), Qatar.	Substations & Power Plant 220kV substations and cables in CCWP and Power Plant (IPP) at Ras Laffan City in Doha, Qatar.
71	Project No. 2012-864 Scope: Detailed Architectural and Electro-Mechanical Design for Residential Tower	Dogmal Trading Co. Limited Najaran, K.S.A.	Najaran Tower Project <ul style="list-style-type: none"> • Preparation of Interior Finishing and Partitioning for all Floors. • Electrical and Fire Alarm Layout for all floors. • Plumbing, Fire Protection and HVAC layout for all floors.
72	Project No. 2012-0901 2013-0938 2018-1094 2018-1133 Scope: Detailed Architectural and Electro-Mechanical Design. Conceptual Design Presentations. Renovation Engineering Works	United Motors Corporation (UMC) UMC Branch office Riyadh K.S.A.	<p>Project No. 2012-0901 - Renovation of After Sales Service Facilities</p> <ul style="list-style-type: none"> • Renovation / Re-Layout of Existing Service Shops Facilities • Additional Express Service lane. • Renovation of Mezzanine floor. • Plumbing, Fire Protection and HVAC layout. • Electrical and Fire Alarm System layout. <p>Project No. 2012-0938 - North of Riyadh Showroom Preparation of Conceptual Architectural Design</p> <p>Project No. 2018-1094 - Proposed Showroom for Used Cars</p> <ul style="list-style-type: none"> • Preparation of Conceptual Drawing and Presentations for Showroom for Used cars • Architectural, Structural, Electro-Mechanical and BOQ issued for Construction. <p>Project No. 2018-1133 - Renovation of Main Sales Showroom</p> <ul style="list-style-type: none"> • Preparation of New Concept for Main Showroom Area. • Presentation of New 3D design, Plans and Elevations.

#	SCOPE	CLIENT	DESIGN TASKS
73	<p>Scope:</p> <p>Conceptual and Preliminary design Concept. Detailed Architectural and Electro-Mechanical Engineering Design and Drawings Issued For Construction. Civil, Plumbing Electrical, Landscaping and Hardscaping drawings Issued For Construction.</p>	Saline Water Conversion Corporation (SWCC)	<p>Project No. 2007-622 - Research Building Institute For Saline Water in Al-Jubail</p> <p>Project No. 2008-674 - Bachelor's Building in Eastern Province Al-Jubail</p> <ul style="list-style-type: none"> • Building 1 - Residential Bachelor Building. (3 Floors, 1 unit). • Building 2 - Residential Bachelor Building. (2 Floors, 2 units). • Building 3 - Mosque Building. <p>Project No. 2010-0766 - Proposed Housing Compound Al-Madinah</p> <ul style="list-style-type: none"> • Building 1 - Residential Building. (4 Floors, 3 units). • Building 2 - Residential Building. (6 Floors, 5 units). <p>Project No. 2010-0767 - Proposed Housing Compound Jeddah</p> <ul style="list-style-type: none"> • Residential Building. (8 Floors, 14 units). <p>Project No. 2010-0768 - Proposed Housing Compound - Jeddah</p> <ul style="list-style-type: none"> • Residential Building. (4 Floors, 17 units). <p>Project No. 2011-000 - Fire Training Building - Al- Jubail</p> <ul style="list-style-type: none"> • Conceptualization Drawings and Presentation for the Main Building. • Architectural, Structural, Electro-Mechanical and BOQ and Specification issued for Construction <p>Contract No. 001-550069 - Ras Al-khair Bachelor's Building Project</p> <ul style="list-style-type: none"> • Type 1 - Residential Bachelor's Building. (6 Units). • Type 2 - Residential bachelor Building's. (6 Units). • V.I.P. Villa (4 Units). • Mosque Building • Market Building • Restaurant Building • Gym and Sports Building. • Cultural Center Building. <p>• Workshop and Administration Building.</p> <p>Project No. 2015-0098 - Housing Complex for Al- Shuqaiq Desalination Plant and Water Transmission Lines.</p> <ul style="list-style-type: none"> • Site 1 - Abha Family Housing and Site Developments (9 Floors) • Site 2 - Al-Shuqaiq Family Housing and Site Developments (5 floors) • Site 3 - Al-Shuqaiq Family Housing and Site Developments (3 Floors) • Site 4 - Al-Shuqaiq Family Housing and Site Developments (1 Floor) • Site 5 - Zahran Station Bachelor's Housing (2 Floors) • Site 6 - PSA2 Bachelor's Housing (2 Floors) • Site 7 - PSA3 Bachelor's Housing (2 Floors) • Site 8 - PSA4 Bachelor's Housing (2 Floors) • Site 9 - Ragal Alma Family (4 Floors) & Bachelor's Housing (2 Floors) • Site 10 - Khazan Bismar Bachelor's Housing (1 Floor) • Site 11 - Al-Barak Station Bachelor's Housing (1 Floor) • Site 12- Sarat Obeid Station Bachelor's Housing (1 Floor) • Site 13- Khazan Jazan Station Bachelor's Housing (1 Floor) • Site 14- Abha Khazan Station Bachelor's Housing (1 Floor)



#	SCOPE	CLIENT	DESIGN TASKS
74	<p>Scope: Conceptual and Preliminary design Concept. Detailed Architectural and Electro-Mechanical Engineering Design and Drawings Issued For Construction. Civil, Plumbing Electrical, Landscaping and Hardscaping drawings Issued For Construction. Project Management and Supervision.</p>	Ports Authority Jubail Industrial Port	<p>Project No. 2011-0810 - Provision of Spare Generator System in Jubail Port Project No. 2011-0842 - Expansion and Development of Facilities & Infrastructure Building 01- Administration Building Building 02- Fire Station Building Building 03- Workshop Building Building 04- Warehouse Building Contract No. 001-550070 - Ras Al-Khair Bachelor's Building</p> <ul style="list-style-type: none"> • Building-01 - Type A - Residential Bachelor's Building. • Building-02 - Type C - Residential bachelor's Building. • Building-03 - Administration and Workshop Building • Building-04 - Mosque Building • Building-05 - Swimming Pool • Building-06 - Entertainment Building • Building-07 - Managers Villa • Building-08 - Executive Manager • Building-09 - Market Building. <p>Supervision for Housing of Royal Guard Officer in Aziziyah Al Khobar</p>
75	<p>Scope: Conceptual and Preliminary design Concept. Detailed Architectural and Electro-Mechanical Engineering Design and Drawings Issued For Construction. Civil, Plumbing Electrical, Landscaping and Hardscaping drawings Issued For Construction. Project Management and Supervision</p>	Advanced Electronics Company (AEC)	<p>Project No. 2010-0740 - Proposed New Administration Building Project No. 2010-0740a - Proposed AEC Main Entrance and Exit Gate Supervision for New Administration Building</p>
76	<p>Scope: Detailed Architectural and Electro-Mechanical Engineering Design and Drawings Issued For Construction. Project Management and Supervision</p>	ASAS PAN Gulf Co.	<p>Project No. 2010-0777 - Commercial Showroom Badr District Riyadh. Project No. 2010-0781 - Commercial Showroom Al- Elrabie District Riyadh</p>
77	<p>Detailed Architectural and Engineering Review for the Construction of Facilities and Infrastructural Development Projects, includes Architectural, Structural, HVAC, Plumbing, Fire Protection, Fire Alarm, Electrical, Telecom, Infrastructural (Civil & Electrical Utilities and Landscape).</p>	GCCE Lab, Dammam Laboratory	<p>Design and Engineering Services for High Power/ High Voltage Low Voltage Laboratory. Electrical Testing Lab (ETL) is Divided in The Following Sections:</p> <ul style="list-style-type: none"> • HV/MV Substation • High Power Laboratories LV Laboratories • Environmental Laboratories • HV & MV Laboratories • High Voltage Cable Laboratories • Calibration Laboratory • Complementary Facilities and Services <p>Design review of complete Infrastructural (Civil & Electrical Utilities, Landscaping/ Irrigation).</p>



#	SCOPE	CLIENT	DESIGN TASKS
78	Architectural Design and Engineering for Services for Community & Industrial Areas	Abdul Rahman Al-Naim Consultant Engineers	<p>THE DESIGN AND A/E SERVICES FOR:</p> <ol style="list-style-type: none"> 1. "Design and Engineering Services for Construction of the remaining work of Residential Buildings in Haii Al-Aziziah 1A, Pjhase 3 at MYAS." 2. "Design and Engineering Services for Construction of the remaining work of Mosque, Kindergarten, Commercial Center in Haii Al-Aziziah 1A at MYAS." 3. "Design and Engineering Services for Construction of the remaining work of Two Kindergartens in the Community Area in Haii Al-Khalid-2 and Haii Al-Nakheel-4 at MYAS." 4. "Design and Engineering Services for Construction of the remaining work of Primary Boys School in Haii Al-Aziziah 5 and Kindergarten in Radwa 6 at MYAS."
79	Engineering Design Consultancy and Supervision for Construction of Npcc New Fabrication Yard at Ras Al Khair, KSA	National Petroleum Construction Company Ltd. (NPCC)	Detailed Architectural and Engineering, Lead the project through all phases of design and delivery including, but not limited to the (Concept Design, Schematic Design, FEED, Tender documentation, technical bids evaluations, attending pre/post bid clarifications, technical recommendations for award, site construction supervision, testing and commissioning, handing over, and assisting NPCC securing of all relevant permits including all local authority liaisons as required.





AJEC Employee Resource Group

Sr. No.	Discipline	Riyadh Head Office	Branch Office	Branch Office		Branch Office	Total
			Yanbu Al-Sinaiyah	Al-Khobar	Al-Khobar (G.E.S. Staff)	Jeddah	
1	Management	10	2	1	2	1	16
2	Project Engineer	1	1	1	10	-	13
3	SCADA & Communication Engineer	-	-	-	-	1	1
4	Commissioning Engineer	-	-	-	-	1	1
5	Civil Engineer	7	5	-	5	5	22
6	Architect	6	5	-	-	-	11
7	Structure Engineer	1	2	3	-	-	6
8	Protection Engineer	-	-	-	-	1	1
9	I&C Engineer	-	-	-	-	1	1
10	Piping Engineer	-	-	-	-	3	3
11	Mechanical Engineer	3	4	2	5	2	16
12	Electrical Engineer	4	4	9	6	2	25
13	Geodetic Engineer	1	-	-	-	-	1
14	Site Supervisor	7	-	-	-	-	7
15	I.T. Engineer	1	-	-	-	-	1
16	Comm Engineer	-	-	-	5	-	5
17	Protection Engineer	-	-	-	2	-	2
18	Safety Engineer	-	-	-	5	-	5
19	Safety Officer	-	1	-	-	-	1
20	Inspector (Mech/Civil/Elect/I&C/HSE)	6	-	-	10	12	28
21	Welding Expert	-	-	-	-	3	3
22	Quantity Estimator	-	-	-	-	2	2
23	CAD Operator	8	20	10	2	-	40
24	Other Staff	29	4	7	5	11	56
Total		84	48	33	57	45	267



AL - JAZIRAH ENGINEERS & CONSULTANTS

Head office - Riyadh

P.O. Box 17918, Riyadh 11494
Tel. (011) 478 5270, 4790470
Fax. (011) 479 4255
ruh@ajec-consulting.com

Branch Office - Jeddah

P.O. Box 19702, Jeddah 21445
Tel. (012) 665 5975
Fax. (012) 661 2576
jeddsn@ajec-consulting.com

Branch Office - Al Khobar

AJEC Tower As Safa Al Khobar
Tel. (013) 858 4415
Fax. (013) 859 3700
alk@ajec-consulting.com

Branch Office - Yanbu

P.O. Box 30721, Yanbu Al Sinayah
Tel. (014) 392 9600
Fax. (014) 3250003
ynb@ajec-consulting.com